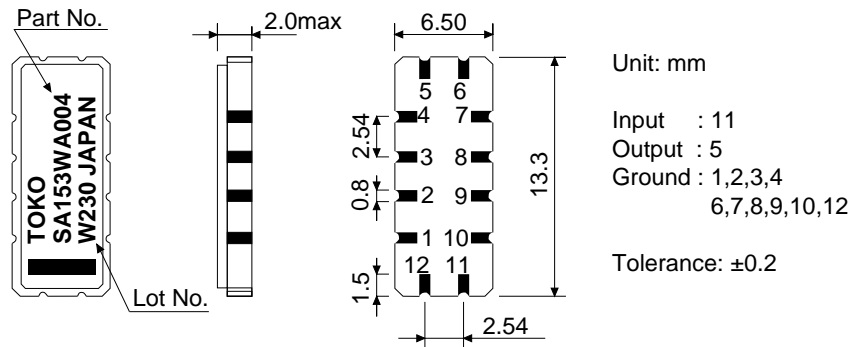


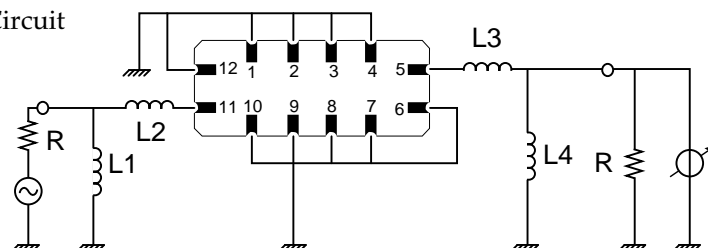
1. Overall Dimensions



2. Electrical Characteristics

2.1	Center Frequency (Fo)	:	153.0 MHz
2.2	Passband Width Fo ± 0.075 MHz	:	2.0 dB
2.3	Stopband Attenuation	:	
	50.0 -> Fo - 3.0 MHz	:	40 dB min
	Fo - 3.0 -> Fo - 1.5 MHz	:	30 dB min
	Fo - 1.5 -> Fo - 0.8 MHz	:	20 dB min
	Fo - 0.6 MHz	:	10 dB min
	Fo - 0.4 MHz	:	3 dB min
	Fo + 0.4 MHz	:	3 dB min
	Fo + 0.6 MHz	:	10 dB min
	Fo + 0.8 -> Fo + 1.5 MHz	:	20 dB min
	Fo + 1.5 -> Fo + 3.0 MHz	:	30 dB min
	Fo + 3.0 -> 200.0 MHz	:	40 dB min
2.4	Passband Ripple	:	2.0 dB max @ Fo ± 0.075 MHz
2.5	Insertion Loss	:	7.0 dB max. , Fo ± 0.075 MHz
2.6	Group Delay Deviation	:	1.00 µsecs p/p max at Fo ± 0.075 MHz
2.7	Intermodulation	:	TBD
2.8	Maximum Input Power	:	TBD
2.9	Operation Temperature	:	-20 -> 70 °C
3.10	Load Impedance	:	
	Source	:	280 Ω -18.5 pF
	Load	:	250 Ω -22.7 pF

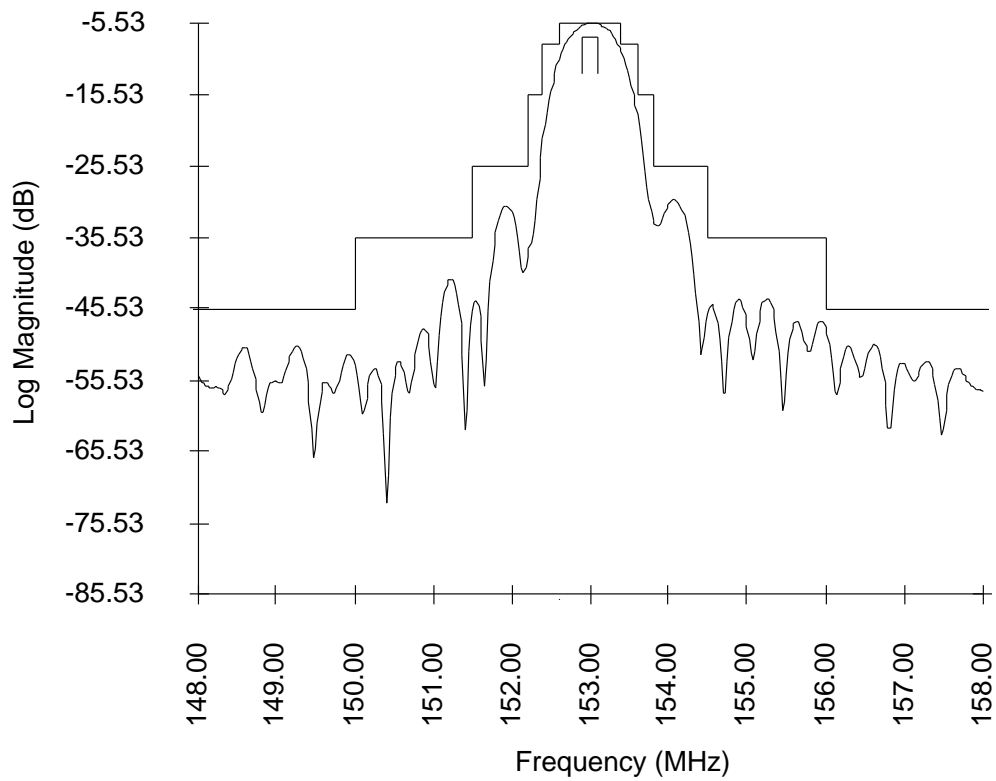
3. Matching Circuit



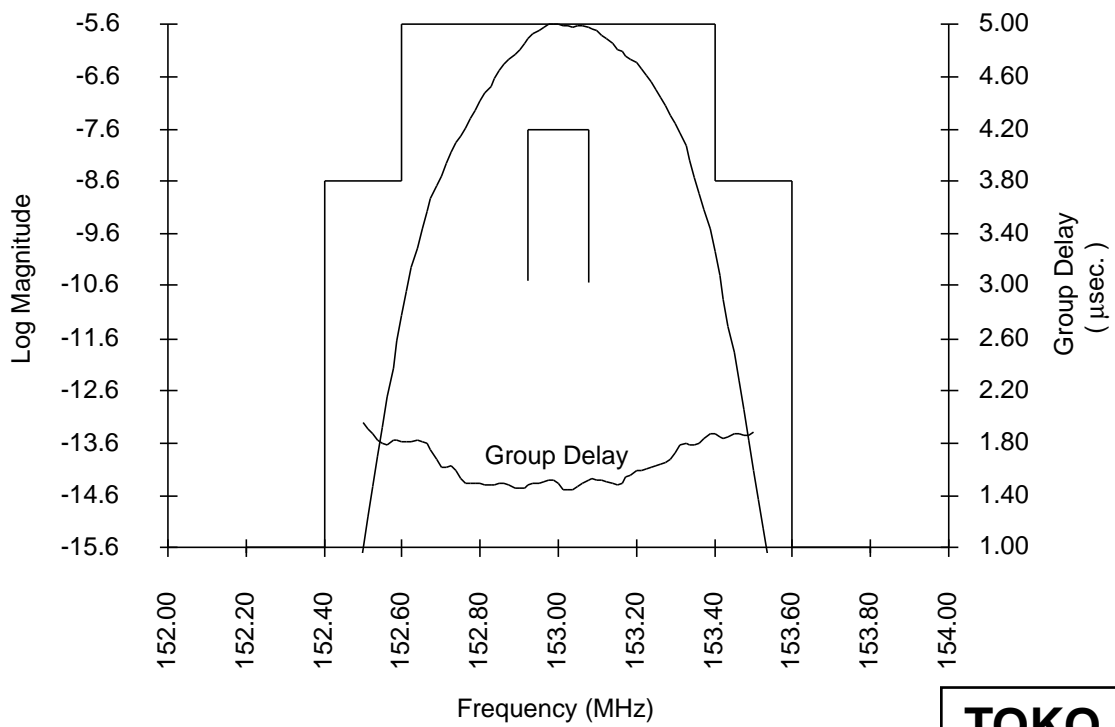
R = 50 Ω
 L1 = 22 nH
 L2 = 22 nH
 L3 = 27 nH
 L4 = 27 nH

4. Sample Data

Typical Response



Typical Passband Response



Typical Ultimate Rejection Performance

